



FEATURES

- ▼ Integral safety cable mounting points.
- ▼ Factory sealed field replaceable globe assembly lowers total cost of ownership. No external seals required.
- ▼ Easy re-lamping from either end of the luminaire allows for flexible positioning.
- ▼ Spring loaded lampholders for maximum vibration resistance.
- ▼ Adjustable mounting brackets allow a 180° range of aiming positions.
- ▼ Ceiling/wall mount hardware included.
- ▼ Housing available in corrosion resistant heavy duty cast marine brass or copper free aluminum.
- ▼ Available in one, two, three or four lamp units.
- ▼ Supplied in 120v 60Hz HPF as standard. Other options in 220v 50Hz, 220v 60Hz and 277v 60Hz are also available.
- ▼ Wide range of lamp sizes in 17w, 20w, 24w, 32w, 35w, 40w, 54w, 60w and 110w.
- ▼ Low temperature rated ballast 0° F (-18° C) standard on T5 and T8; T12 HO linear fluorescents -20° F (-29° C).
- ▼ Emergency versions available for two lamp models only.
- ▼ 5 year warranty.

APPROVALS

- ▼ UL 844 - Hazardous Location
 Class I Division 1 Groups C & D
 Class II Division 1 Groups E, F & G
 Class III
- ▼ UL 924 - Emergency Lighting Equipment
- ▼ UL 1598A - Marine Outside Type Saltwater
- ▼ Conforms to IP 66
- ▼ CSA
- ▼ ABS

APPLICATIONS

- ▼ Class I Division 1 hazardous locations
- ▼ Offshore oil and gas exploration and production
- ▼ Fuel dispensing facilities
- ▼ Petrochemical
- ▼ Natural gas processing
- ▼ Paint spray
- ▼ Marine and wet environments

OPTIONS

To obtain a luminaire with any of the options listed below, please add the following suffix to the part number (not all options can be combined):

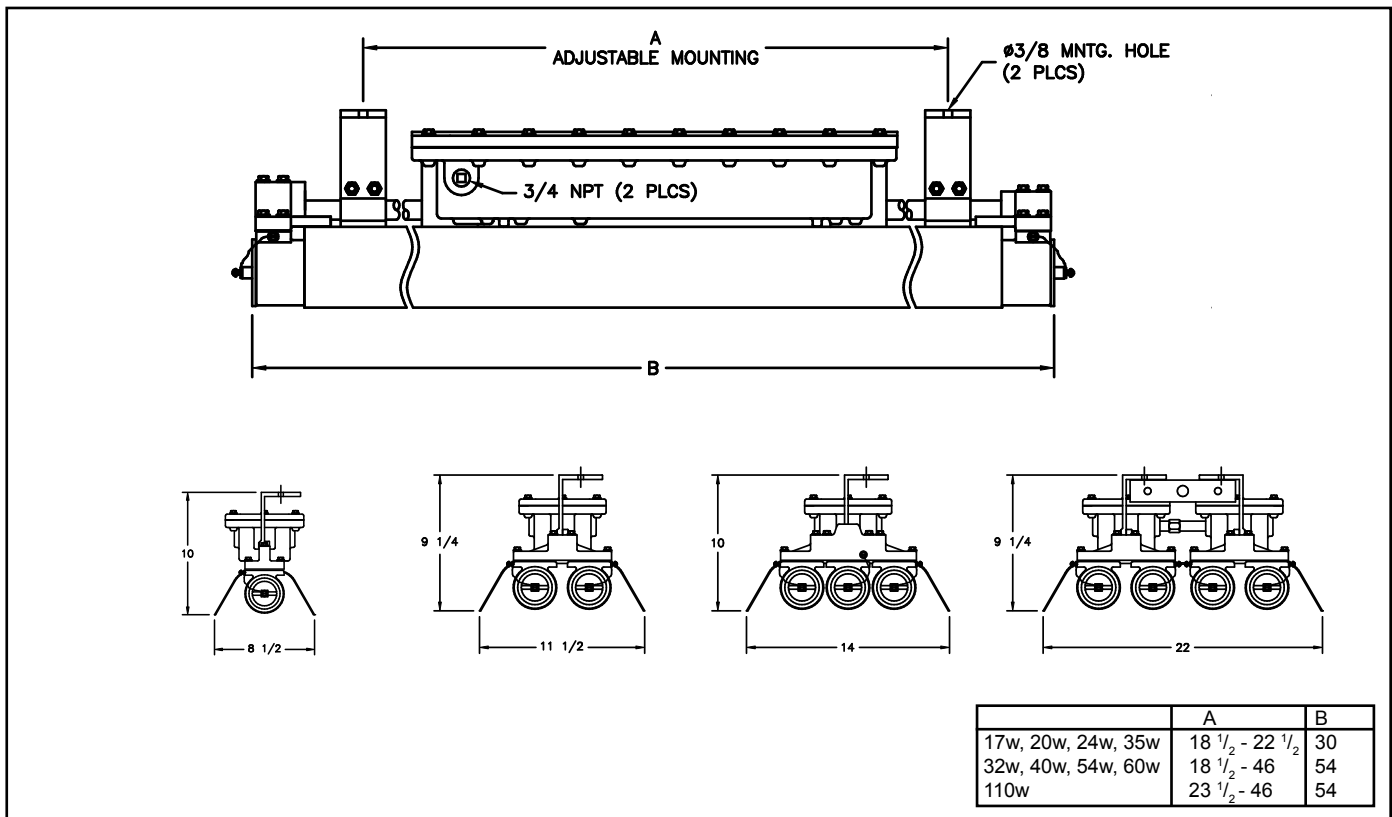
▼ Stainless Steel Wire Guard	GRD
▼ Paint Spray Area Type Luminaire	PNT
▼ Pendant Mount $\frac{3}{4}$ " NPT (aluminum only)	CY4
▼ Tilt Mount Brackets (aluminum only)	TLT
▼ Shock and Vibration Mount (aluminum only)	SM
▼ Emergency Ballast (1 lamp)	EM*
▼ Emergency Ballast (2 lamp)	EM2**
▼ Fused Ballast (not for marine use)	F
▼ 120-277 50/60Hz (17, 24, 32, 35, 54 & 60w)	-127
▼ 220v 60Hz	-226
▼ 220v 50Hz	-225*
▼ 277v 60Hz	-276
▼ Terminal Block	T
▼ Nickel Plated Marine Brass End Caps	NP
▼ Access Cap and Cover with Inspection Hole	INSP

* Not available on 24w or 54w.

** Not available on 35w, 60w or 110w versions. Also not available on any 1 or 3 lamp luminaire.

LUMINAIRE TECHNICAL SPECIFICATIONS

DIMENSIONS



Dimensions in inches

HOUSING

Available in heavy duty cast marine brass or copper free aluminum alloy in a natural finish. May also be ordered with a nickel plated coating on the re-lamp end caps & binocular assembly (see options).

HARDWARE

Stainless steel.

REFLECTOR

White high gloss polyester powder coated marine brass or aluminum.

LAMP TYPE

T5, T8 and T12 fluorescent lamps are standard dependant on wattage. Luminaires are supplied with lamps.

GLOBE ASSEMBLY

Factory sealed field replaceable globe assembly. No external seals required. High impact resistant glass tubes encase each individual lamp.

LAMPHOLDER

Spring loaded lampholders provide a positive electrical contact and offer resistance to shock and vibration.

BALLAST

A High Power Factor (HPF) 120v 60Hz ballast is supplied as standard. 17w, 20w, 24w, 32w, 40w and 54w luminaires are rated for starting in temperatures down to -18° C (0° F) and 35w, 60w and 110w luminaires in temperatures down to -29° C (-20° F). Other voltage options and emergency ballasts also available. All ballast electronic with the exception of 20w T12. Magnetic ballasts are available, please contact factory.

OUTLETS

All units are supplied with two 3/4" NPT outlets, one plugged, providing a thru-feed service where required.

MOUNTING

Provided with two 3/8" Ø mounting holes supplied with beam clamps and stainless steel safety cable(s).

AMBIENT & OPERATING TEMPERATURE

All luminaires are rated 40° C with a temperature code of T5 for Class I areas and T3C for Class II & III areas.

ORDERING REFERENCES

FLUORESCENT & COMPACT FLUORESCENT LUMINAIRES						
DESCRIPTION	NO OF LAMPS	LAMP TYPE	MARINE BRASS	WEIGHT (LBS)	ALUMINUM	WEIGHT (LBS)
17w 265 MA 24" Lamp	One	F17T8	FEPR117B	71.0	FEPR117A	26.0
	Two		FEPR217B	82.0	FEPR217A	32.0
	Three		FEPR317B	103.0	FEPR317A	43.0
	Four		FEPR417B	166.0	FEPR417A	66.0
20w Trigger Start 24" Lamp	One	F20T12	FEPR120B	72.0	FEPR120A	27.0
	Two		FEPR220B	83.0	FEPR220A	33.0
	Three		FEPR320B	104.0	FEPR320A	44.0
	Four		FEPR420B	168.0	FEPR420A	68.0
24w High Output	One	F24T5 /HO	FEPR124B	71.0	FEPR124A	26.0
	Two		FEPR224B	82.0	FEPR224A	32.0
	Three		FEPR324B	103.0	FEPR324A	43.0
	Four		FEPR424B	166.0	FEPR424A	66.0
32w 265 MA 48" Lamp	One	F32T8	FEPR132B	80.0	FEPR132A	32.0
	Two		FEPR232B	90.5	FEPR232A	40.5
	Three		FEPR332B	101.0	FEPR332A	52.0
	Four		FEPR432B	183.0	FEPR432A	83.0
35w High Output 800 MA 24" Lamp	One	F24T12	FEPR135B	72.8	FEPR135A	31.5
	Two		FEPR235B	83.8	FEPR235A	37.5
	Three		FEPR335B	107.0	FEPR335A	47.0
	Four		FEPR435B	170.0	FEPR435A	77.0
40w 430 MA 48" Lamp	One	F40T12	FEPR140B	75.0	FEPR140A	33.0
	Two		FEPR240B	91.5	FEPR240A	41.5
	Three		FEPR340B	115.0	FEPR340A	53.0
	Four		FEPR440B	185.0	FEPR440A	85.0
54w High Output	One	F54T5 /HO	FEPR154B	80.0	FEPR154A	32.0
	Two		FEPR254B	90.5	FEPR254A	40.5
	Three		FEPR354B	101.0	FEPR354A	52.0
	Four		FEPR454B	183.0	FEPR454A	83.0
60w High Output 800 MA 48" Lamp	One	F48T12 /HO	FEPR160B	76.3	FEPR160A	33.3
	Two		FEPR260B	91.3	FEPR260A	42.3
	Three		FEPR360B	114.3	FEPR360A	49.0
	Four		FEPR460B	185.0	FEPR460A	85.0
110w Very High Output 1500 MA 48" Lamp	One	F48T12 /VHO	FEPR1110B	92.0	FEPR1110A	42.0
	Two		FEPR2110B	106.0	FEPR2110A	51.0
	Three		N/A		N/A	
	Four		FEPR4110B	214.0	FEPR4110A	104.0

SPARE PARTS

BALLAST 120V AC 60Hz				COMPLETE GLOBE ASSEMBLY			
1 x 17w FX5173	3 x 32w FX5122	2 x 60w FX5027		Marine Brass		Aluminum	
2 x 17w FX5260	1 x 35w FX5100	3 x 60w FX5040		17w FX9020B-17		FX9020A-17	
3 x 17w FX5122	2 x 35w FX5027	1 x 110w FX5046		20w FX9020B-20		FX9020A-20	
1 x 20w FX5260	3 x 35w FX5040	2 x 110w FX5017		24w FX9020B-24		FX9020A-24	
2 x 20w FX5001	1 x 40w FX5011			32w FX9018B-32		FX9018A-32	
3 x 20w FX5055	2 x 40w FX5004			35w FX9020B-35		FX9020A-35	
1 x 24w FX5307	3 x 40w FX5038			40w FX9018B-40		FX9018A-40	
2 x 24w FX5307	1 x 54w FX5305			54w FX9018B-54		FX9018A-54	
1 x 32w FX5173H	2 x 54w FX5305			60w FX9018B-60		FX9018A-60	
2 x 32w FX5260H	1 x 60w FX5027			110w FX9018B-110		FX9018A-110	
EMERGENCY BALLAST 120V-277V				SAFETY CABLE			
17, 20, 32 & 40w	FX5135U 1 lamp			Stainless Steel	FX6806	ACCESS CAP	
17, 20, 32 & 40w	FX5095U 1 lamp or 2 lamp					Aluminum	FX6802A
						Marine Brass	FX6802B
LAMPS				GUARDS 2 ft			
17w FX3528	40w FX3504			1 lamp	FX1013	FX1014	
20w FX3506	54w FX3567			2 lamp	FX1004	FX1002	
24w FX3568	60w FX3505			3 lamp	FX1010	FX1005	
32w FX3527	110w FX3511			4 lamp	FX1004 2 required	FX1002 2 required	
35w FX3507							
LAMP HOLDERS				BRACKETS			
2 per lamp	Aluminum	Marine Brass		Standard (each)	FX7007B	FX7007	
35, 60 & 110w	FX4010	FX4010B		Tilt Kits (includes 2)	FX7005B	FX7005	
17, 20, 32 & 40w	FX4012	FX4012B					
24 & 54w	FX4622	FX4622B					

FACTORY SEALED FIELD REPLACEABLE GLOBE ASSEMBLY

FEPR Globe Replacement Instructions

Field replacement of the FEPR series globe assembly is easy, but should be done by a qualified person only. As seen below (figure 1), make sure that the power is off prior to any servicing. Remove the end caps and cut the wire connections (figure 2). While supporting the globe end casting, loosen and remove the 4 bolts from each end (figure 3). Replace with a new globe assembly in the reverse order. Feed the wires back into the globe ends and bolt in place (figure 4). Rewire as per the diagram provided with the replacement globe. Check for proper lamp installation and replace end caps (figure 5). Reapply power and inspect for proper operation (figure 6). It's that simple! Remember to use caution when handling broken parts and glass.



Figure - 1



Figure - 2



Figure - 3



Figure - 4



Figure - 5



Figure - 6