



FEATURES

- ▼ Lamp options in 1 x 60w or 2 x 40w, 2 x 60w incandescent or 1 x 13w, 2 x 13w, 2 x 18w or 2 x 26w compact fluorescent. Shallow type versions will operate incandescent lamps only.
- ▼ Shallow or deep box units housing incandescent or compact fluorescent lamps.
- ▼ Choice of corrosion resistant housings in die-formed marine brass or copper free aluminum.
- ▼ Supplied with prismatic polycarbonate lens.
- ▼ 5 year warranty.

APPROVALS

- ▼ UL 1598A - Marine Inside Drip Proof Type
- ▼ ABS
- ▼ Conforms to IP 62

APPLICATIONS

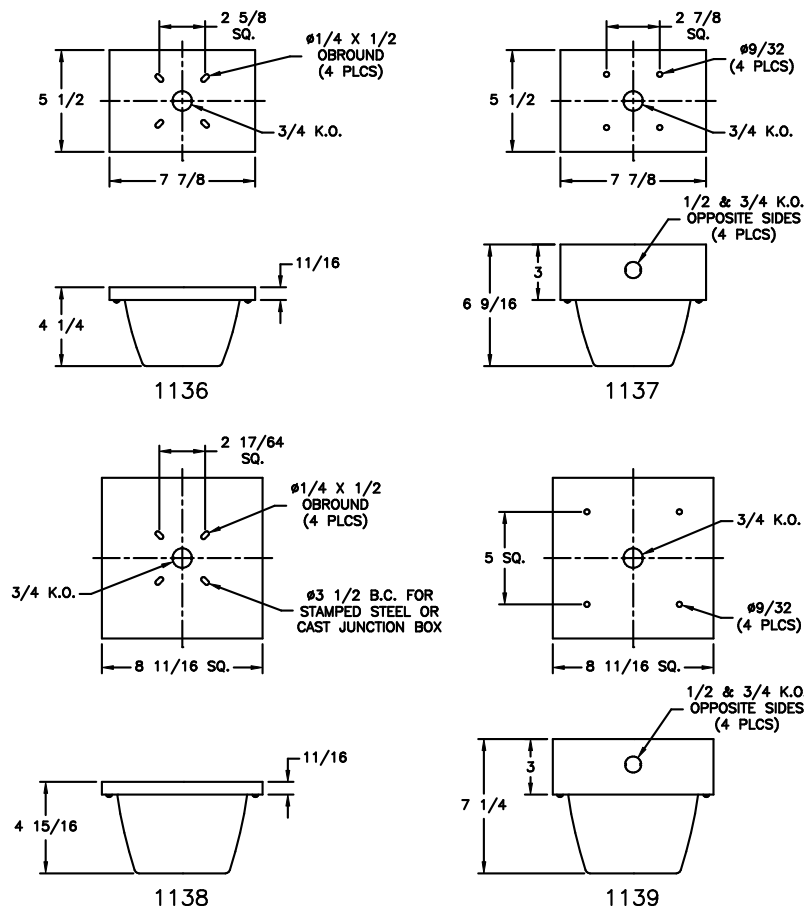
- ▼ Marine environments
- ▼ Offshore oil and gas platforms
- ▼ Drill ships and exploration vessels
- ▼ Tankers and cargo ships
- ▼ Cabin lighting
- ▼ Corridor lighting
- ▼ Amenity/recreation facility lighting

OPTIONS

To obtain a luminaire with any of the options listed below, please add the following suffix to the part number:

- ▼ 277v 60Hz (compact fluorescent only) -276

DIMENSIONS



LUMINAIRE TECHNICAL SPECIFICATIONS

HOUSING

Available in die-formed marine brass or copper free aluminum with an oven-cured powder coat protective finish in dark bronze luminaires or black wrinkle effect for aluminum luminaires.

KNOCKOUTS

The 1136 and 1138 shallow type unit has one $\frac{3}{4}$ " knock out. The 1137 deep box luminaire has three $\frac{1}{2}$ " knock outs one at each end and one on the back while the 1139 version has five knockouts, one $\frac{1}{2}$ " knock out at opposite ends, one $\frac{3}{4}$ " knockout at opposite ends and one $\frac{3}{4}$ " knock out on the back of the unit.

GASKETS

One piece silicone gasket provides an effective seal between the lens and housing.

LENS

A prismatic clear polycarbonate lens is provided.

VOLTAGE OPERATION

Fluorescent luminaires are supplied to operate on 120v AC 60Hz as standard. Incandescent luminaires are rated up to 250v AC.

LAMP TYPE

1136 shallow type luminaires will operate 1 x 60w incandescent lamps only. 1137 deep box units will operate 1 x 60w incandescent lamps or 1 x 13w or 1 x 18w compact fluorescent lamps. 1138 shallow type luminaires will operate 2 x 40w incandescent lamps only. 1139 deep box type units will operate 2 x 60w incandescent lamps and 2 x 13w, 18 or 26w compact fluorescent lamps. Compact fluorescent luminaires are supplied with lamps; incandescent luminaires are supplied without lamps.

LAMPHOLDER

A porcelain lampholder is supplied on incandescent luminaires. Polycarbonate lampholders are supplied on compact fluorescent.

ORDERING REFERENCES

INCANDESCENT LUMINAIRES				
DESCRIPTION	LAMP SIZE	ALUMINUM WEIGHT (lbs)	MARINE BRASS TYPE (B)	ALUMINUM TYPE (A)
Shallow Box Type	1 x 60w	2.0	1136B	1136A
	2 x 40w	2.5	1138B	1138A
Deep Box Type	1 x 60w	2.5	1137B	1137A
	2 x 60w	3.0	1139B	1139A

COMPACT FLUORESCENT LUMINAIRES
<p>Compact fluorescent luminaires are available in 13w, 18w and 26w versions. 1137 units will operate 1 x 13w or 18w lamps only and 1139 units will operate 2 x 13w, 18w or 26w lamps. To order compact fluorescent luminaires choose the part number of the similar style incandescent luminaire, prefix the number with the letter "F" and select one of the following suffix that denotes your preferred lamp size.</p> <p style="text-align: center;">13w - 13 • 18w - 18 • 26w - 26</p> <p>Worked Example: F1139B-18 is a marine brass deep box drip proof ceiling luminaire with 2 x 18w compact fluorescent lamps.</p>

SPARE PARTS			
LAMPS	40w Incandescent	INX3531	LENS Clear Prismatic (1 lamp) INX2164 Clear Prismatic (2 lamp) INX2165
	60w Incandescent	INX3526	
	13w Compact fluorescent	FX3530	LENS GASKET 1 Lamp GKT5079 2 Lamps GKT5081
	18w Compact fluorescent	FX3524	
	26w Compact fluorescent	FX3526	
LAMP HOLDERS	Incandescent	INX4088	BALLAST - 120VAC 60Hz 1 x 13w FX5087 1 x 18w FX5206 1 x 26w FX5206
	Compact fluorescent 13w	FX4047	
	Compact fluorescent 18w	FX4030	
	Compact fluorescent 26w	FX4034	