



FEATURES

- ▼ Lamp options in 2 x 60w incandescent; or 2 x 13w, 18w or 26w compact fluorescent.
- ▼ Shallow, deep or recessed luminaires housing incandescent or compact fluorescent lamps.
- ▼ Choice of corrosion resistant housings in die-formed marine brass or copper free aluminum.
- ▼ Supplied with prismatic polycarbonate lens.
- ▼ 5 year warranty.

APPROVALS

- ▼ UL 1598A - Marine Inside Drip Proof Type
- ▼ ABS
- ▼ Conforms to IP 62

APPLICATIONS

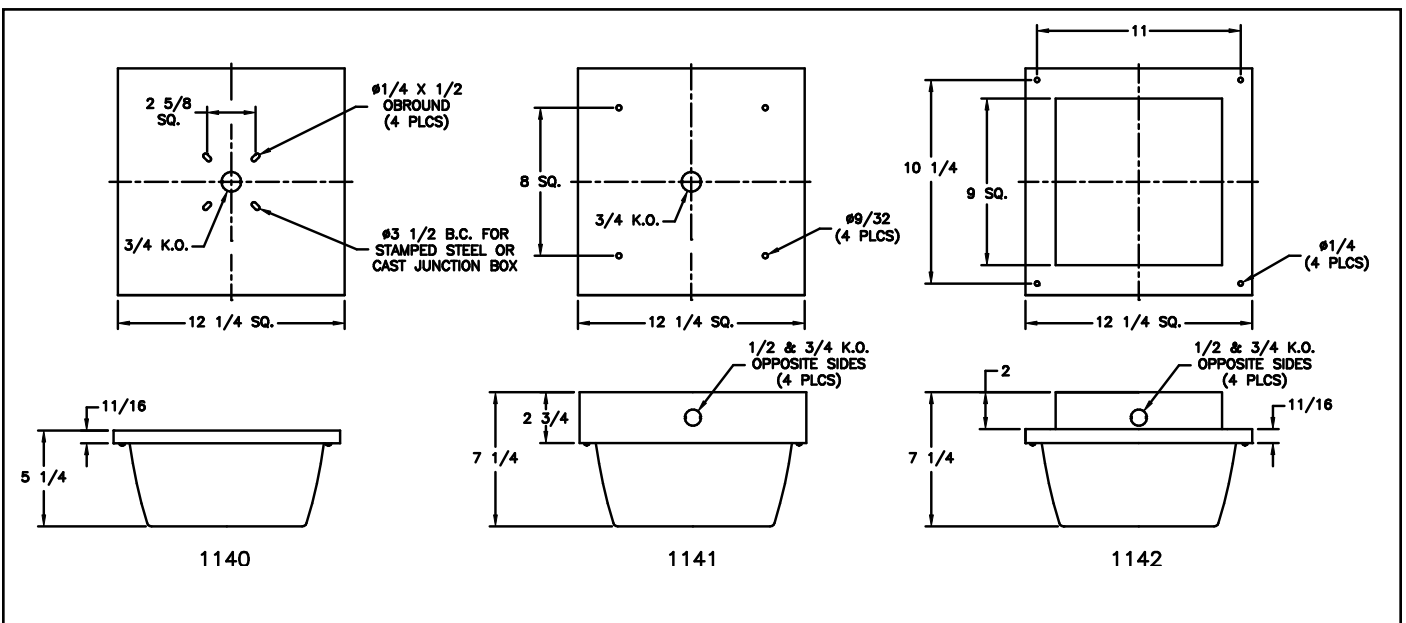
- ▼ Marine environments
- ▼ Offshore oil and gas platforms
- ▼ Drill ships and exploration vessels
- ▼ Tankers and cargo ships
- ▼ Cabin lighting
- ▼ Corridor lighting
- ▼ Amenity/recreation facility lighting

OPTIONS

To obtain a luminaire with any of the options listed below, please add the following suffix to the part number:

- ▼ 277v 60Hz (compact fluorescent only) -276

DIMENSIONS



Dimensions in inches

LUMINAIRE TECHNICAL SPECIFICATIONS

HOUSING

Available in die-formed marine brass or copper free aluminum with an oven-cured powder coat protective finish in dark bronze luminaires or black wrinkle effect for aluminum luminaires.

KNOCKOUTS

The 1140 shallow type unit has one 3/4" knockout on the back of the luminaire. Both the 1141 deep box type and the 1142 recessed type have a total of five knock outs on each luminaire. One 1/2" knock out at opposite ends, one 3/4" knockout at opposite ends and one 3/4" knockout on the back of the luminaire.

LAMPHOLDER

A porcelain lampholder is supplied as standard on incandescent luminaires. Fluorescent luminaires are supplied with a polycarbonate lampholder.

VOLTAGE OPERATION

Fluorescent luminaires are supplied to operate on 120v AC 60Hz as standard. Incandescent luminaires are rated to 250v AC.

LAMP TYPE

Fixtures will operate 2 x 60w incandescent lamps or 2 x 13, 18 or 26w compact fluorescent lamps. Shallow type luminaires will operate incandescent lamps only. Compact fluorescent luminaires are supplied with lamps; incandescent luminaires are supplied without lamps.

GASKETS

One piece neoprene gasket provides an effective seal between the lens and housing.

LENS

A prismatic clear polycarbonate lens is provided as standard.

ORDERING REFERENCES

INCANDESCENT LUMINAIRES				
DESCRIPTION	LAMP SIZE	ALUMINUM WEIGHT (lbs)	MARINE BRASS TYPE (B)	ALUMINUM TYPE (A)
Shallow Box Type	2 x 60w	3.0	1140B	1140A
Deep Box Type	2 x 60w	4.0	1141B	1141A
Recessed Box Type	2 x 60w	4.0	1142B	1142A

COMPACT FLUORESCENT LUMINAIRES
<p>Compact fluorescent luminaires are available in 13w, 18w and 26w versions. These lamps will fit the corresponding incandescent luminaires (except shallow type versions). To order compact fluorescent luminaires choose the part number of the similar style incandescent luminaire, prefix the number with the letter "F" and select one of the following suffix that denotes your preferred lamp size.</p> <p style="text-align: center;">13w - 13 • 18w - 18 • 26w - 26</p> <p>Worked Example: F1141B-18 is a marine brass deep dish drip proof ceiling luminaire with 2 x 18w compact fluorescent lamps.</p>

SPARE PARTS			
LAMPS Incandescent INX3526 13w Compact fluorescent FX3522 18w Compact fluorescent FX3525 26w Compact fluorescent FX3538		LENS Clear Prismatic INX2180	
		LENS GASKET GKT5083	
LAMP HOLDERS Incandescent INX4088 Compact fluorescent 13w FX4035 Compact fluorescent 18w FX4033 Compact fluorescent 26w FX4052		BALLAST - 120VAC 60Hz	
		1 x 13w (2 required)	FX5087
		2 x 18w	FX5193
		3 x 26w	FX5171