



FEATURES

- ▼ Corrosion resistant copper free aluminum housing with a white oven-cured polyester powder coat high gloss protective finish.
- ▼ 2 5/8 inch low profile luminaire for tight space applications.
- ▼ Lamp options in 2 x 17, 20, 24, 32, 40 and 54w luminaires.
- ▼ High impact protective wire guard available.
- ▼ Rated for operation on 120v AC 60Hz as standard. Other voltages optional.
- ▼ Supplied with a wrap around high impact extruded acrylic lens gives even uniform light distribution.
- ▼ Emergency luminaires available.
- ▼ Individual ballast available for independent switching or color effects.
- ▼ 5 year warranty.

APPROVALS

- ▼ UL 1598A - Marine Inside Drip Proof Type
- ▼ UL 924 - Emergency Lighting Equipment
- ▼ ABS
- ▼ Conforms to IP 52

APPLICATIONS

- ▼ Marine and wet environments
- ▼ Offshore oil and gas platforms
- ▼ Drill ships and exploration vessels
- ▼ Tankers
- ▼ Cabin and Hallway lighting

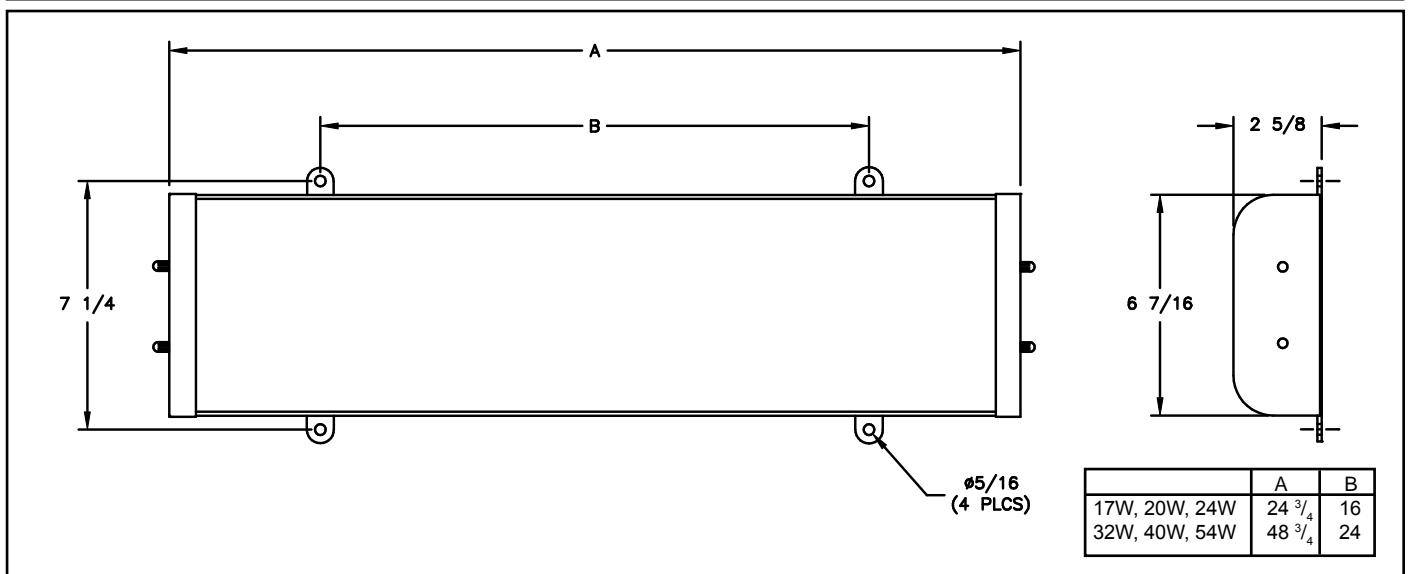
OPTIONS

To obtain a luminaire with any of the options listed below, please add the following suffix to the part number (not all options can be combined):

- | | |
|--|-------|
| ▼ Frosted White Lens | E |
| ▼ Red Filter Tube (1 Lamp) | RV-1* |
| ▼ Red Filter Tube (all Lamps) | RV* |
| ▼ Blue Filter Tube (1 Lamp) | BV-1* |
| ▼ Blue Filter Tube (all Lamps) | BV* |
| ▼ Yellow Filter Tube (1 Lamp) | YV-1* |
| ▼ Yellow Filter Tube (all Lamps) | YV* |
| ▼ Low Temperature Rated Luminaire | DEG |
| ▼ Emergency Ballast | EM |
| ▼ Guard | GRD |
| ▼ 120-277v 50/60 Hz (17, 24, 32 & 54w) | -127 |
| ▼ 220v 50Hz | -225 |
| ▼ 220v 60Hz | -226 |
| ▼ 277v 60Hz | -276 |

* Not available in 24w or 54w.

DIMENSIONS





DAMP/WET LOCATIONS, INSIDE DRIP PROOF LOW PROFILE FLUORESCENT CEILING LUMINAIRES

LUMINAIRE TECHNICAL SPECIFICATIONS

HOUSING AND END CAPS

Corrosion resistant copper free aluminum with an oven-cured polyester powder coat protective finish.

GUARD

Stainless steel wire guard available.

OUTLETS

All units are supplied blank unless otherwise specified.

GASKETS

Closed cell neoprene gasket covers the entire end and sides sealed against the diffuser.

LAMPHOLDER

Twist and lock lampholders provide resistance to shock and vibration.

LAMP TYPE

T5, T8 and T12 models use standard lamps dependent on wattage, which are not provided.

BALLAST

Standard luminaires equipped with a High Power Factor (HPF) 120v 60Hz ballast. All ballast electronic with the exception of 20w T12. Magnetic ballasts are available, please contact factory. Other voltage options and emergency ballast also available.

LENS

A wrap around impact resistant extruded DR acrylic lens is provided as standard.

ORDERING REFERENCES

DRIP PROOF FLUORESCENT LUMINAIRES						SPARE PARTS	
DESCRIPTION SIZE	LAMP TYPE	LAMP SIZE	WEIGHT (lbs)		ALUMINUM TYPE		
Low Profile Fluorescent	F17T8	2 x 17w	6.0	FLC217	2 foot	LAMPHOLDER Set of 2 (17/20/32/40w) FX4036 Set of 2 (24/54w) FX4065	
Low Profile Fluorescent	F20T12	2 x 20w	7.0	FLC220	2 foot	BALLASTS 2 X 17w FX5260 2 x 20w FX5001 2 x 24w FX5307 2 x 32w FX5260H 2 x 40w FX5004 2 X 54W FX5305	
Low Profile Fluorescent	F24T5/HO	*2 x 24w	6.0	FLC224	2 foot	LENSES 2' Clear FX2016 2' White FX2018 4' Clear FX2017 4' White FX2019	
Low Profile Fluorescent	F32T8	2 x 32w	9.5	FLC232	4 foot	GUARDS 2 foot FX1008 4 foot FX1007	
Low Profile Fluorescent	F40T12	2 x 40w	10.5	FLC240	4 foot		
Low Profile Fluorescent	F54T5/HO	*2 x 54w	9.5	FLC254	4 foot		

* Approvals pending.