



FEATURES

- ▼ Junction box (7120) or Stem/Pendant mount (7121) versions.
- ▼ Choice of corrosion resistant housing in rugged heavy cast marine brass or natural copper free aluminum.
- ▼ High impact protective guard in rugged heavy web cast marine brass or natural copper free aluminum available as an option.
- ▼ Xenon strobe output rated at 50 ECP (effective candle power). Rated for 7,000 hours.
- ▼ Wide voltage operation on 120v AC, 240v AC and 12-48v DC.
- ▼ Supplied with clear fresnel lens as standard with a wide choice of colored lens: yellow, green, red and blue.
- ▼ Unique gasketed design ensures complete weather tight seal preventing ingress of dirt or moisture into the luminaire.
- ▼ Suitable for mounting base up or down.
- ▼ 5 year warranty.

APPROVALS

- ▼ Class I Division 2 Groups A B C & D
- ▼ Enclosure Type 4X
- ▼ ABS
- ▼ Conforms to IP 66

APPLICATIONS

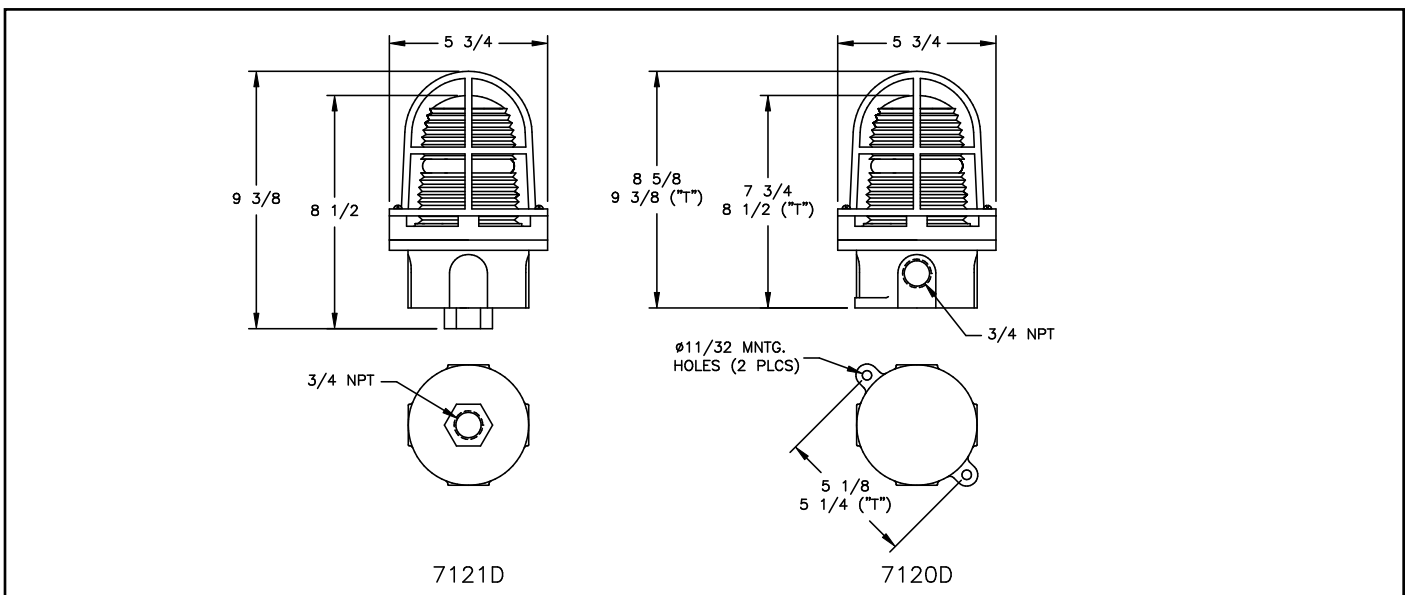
- ▼ Marine and wet environments
- ▼ Offshore oil and gas platforms
- ▼ Drill ships and exploration vessels
- ▼ Tankers and cargo ships
- ▼ Obstruction marking
- ▼ Heli-pad marking

OPTIONS

To obtain a luminaire with any of the options listed below, please add the following suffix to the part number (not all options can be combined):

- | | |
|----------------------------------|------|
| ▼ 12v -48v DC | LV |
| ▼ 240v 50/60Hz | -240 |
| ▼ Guard | D |
| ▼ Terminal Block (box type only) | T |

DIMENSIONS



Dimensions in inches

LUMINAIRE TECHNICAL SPECIFICATIONS

HOUSING

Available in heavy cast marine brass or natural copper free aluminum.

GUARD

Natural heavy web cast marine brass or natural copper free aluminum available as an option.

OUTLETS

All junction box units are supplied drilled and tapped $\frac{3}{4}$ " NPT four way with three plugs. Stem mount units are supplied drilled and tapped with one $\frac{3}{4}$ " NPT outlet as standard.

GASKETS

One piece silicone gasket provides a watertight between the lens and housing.

TERMINAL BLOCK

A 4 pole terminal block is available as an option for box type only.

CIRCUIT BOARD

All luminaires are supplied complete with boards rated to operate on 120v AC 60Hz. Other options include 240v 50/60Hz and 12-48v DC.

LAMP TYPE

All luminaires are supplied complete with a xenon strobe lamp. Rated for 7,000 hours.

LENS

A clear high impact fresnel glass lens is provided as standard. Colored lenses are available in yellow, green, red and blue.

CURRENT DRAW

120v AC 50/60 Hz = .10 amps

240v AC 50/60 Hz = .07 amps

LV 12-48v DC = .44 - .10 amps

TEMPERATURE CODE

Temperature rating T6 at 40° C ambient temperature.

ORDERING REFERENCES

| INCANDESCENT HELIPORT DECK LIGHT | | | | |
|----------------------------------|-----------------------|---------------------------|-------------------|-----------------------|
| DESCRIPTION | MARINE BRASS TYPE (B) | MARINE BRASS WEIGHT (lbs) | ALUMINUM TYPE (A) | ALUMINUM WEIGHT (lbs) |
| STEM MOUNT | | | | |
| Clear Lens | 7121BCG | 8.0 | 7121ACG | 3.5 |
| Red Lens | 7121BRG | 8.0 | 7121ARG | 3.5 |
| Blue Lens | 7121BBG | 8.0 | 7121ABG | 3.5 |
| Green Lens | 7121BGG | 8.0 | 7121AGG | 3.5 |
| Yellow Lens | 7121BYG | 8.0 | 7121AYG | 3.5 |
| BOX TYPE | | | | |
| Clear Lens | 7120BCG | 8.0 | 7120ACG | 3.5 |
| Red Lens | 7120BRG | 8.0 | 7120ARG | 3.5 |
| Blue Lens | 7120BBG | 8.0 | 7120ABG | 3.5 |
| Green Lens | 7120BGG | 8.0 | 7120AGG | 3.5 |
| Yellow Lens | 7120BYG | 8.0 | 7120BYG | 3.5 |

| SPARE PARTS | | | |
|---|----------|--|------------------------------|
| GUARDS Bronze Guard Aluminum Guard (Standard guard fits both luminaire types) | INX1004B | LAMP Xenon | INX3724 |
| | INX1004A | | GASKETS Gasket Set |
| LENS (5 1/2" overall height) Clear Green Blue Red Yellow | INX2058C | CIRCUIT BOARDS 120v AC 240v AC 12-28v DC | INX3390 |
| | INX2058G | | INX3391 |
| | INX2058B | | INX3392 |
| | INX2058R | | |
| | INX2058Y | | |