

## FEATURES

- ▼ FWN luminaire encased in an exterior housing for horizontal mounting with a colored indicator lens which deflects light vertically.
- ▼ Choice of corrosion resistant exterior housing in rugged natural finish stainless steel or copper free aluminum with an oven-cured polyester powder coated finish.
- ▼ Supplied with a choice of colored diffuser in yellow or blue.
- ▼ Available in two and three lamp units.
- ▼ Supplied in 120v 60Hz HPF as standard. Other options in 220v 50Hz, 220v 60Hz and 277v 60Hz also available.
- ▼ Available in 32w, 40w and 60w fluorescent.
- ▼ Low temperature operating ballast.
- ▼ Emergency versions available with up to 1½ hours emergency battery duration.
- ▼ 5 year warranty.

## APPROVALS

- ▼ Conforms to Class I Division 2 Groups A, B, C & D\*
  - ▼ Conforms to Class I Zone 2 Groups IIA, IIB, IIB + IIC\*
  - ▼ CSA\*
  - ▼ ABS
  - ▼ Conforms to IP 66
- \* Only the internal luminaire is UL/CSA listed.

## APPLICATIONS

- ▼ Hazardous locations
- ▼ Marine and wet environments
- ▼ Offshore oil and gas platforms
- ▼ Drill ships and exploration vessels
- ▼ Tankers
- ▼ Obstruction marking
- ▼ Heli-pad marking and perimeter lighting

## OPTIONS

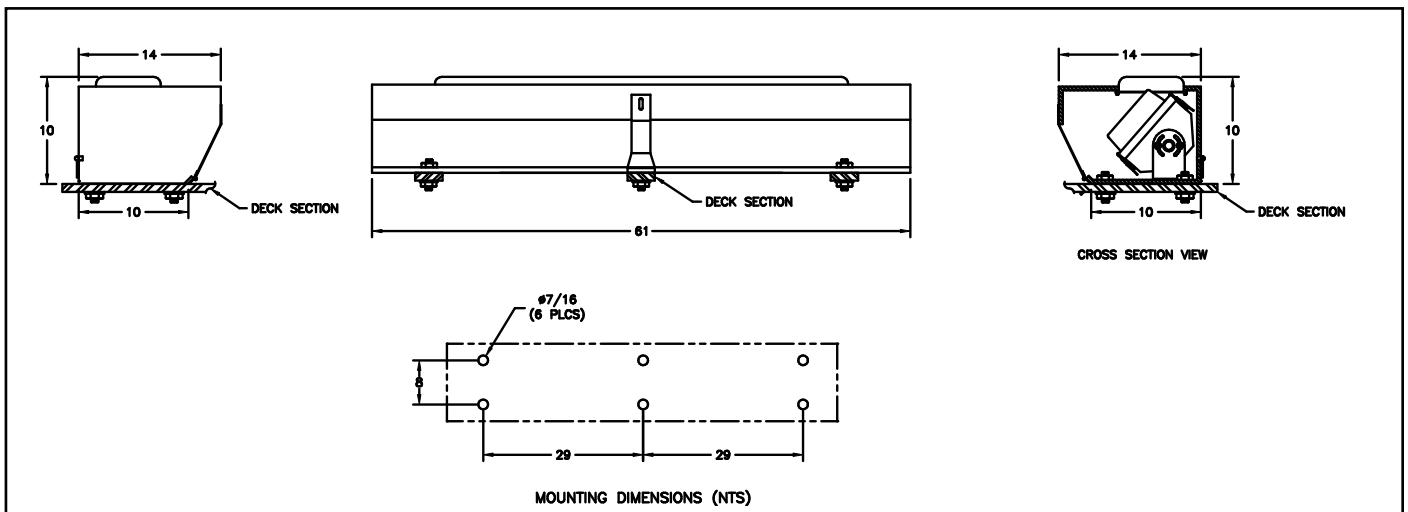
To obtain a luminaire with stainless steel housing, substitute the following letter in part number for "A":

- ▼ Stainless Steel Fixture Housing (32w only) "S"

To obtain a luminaire with any of the options listed below, please add the following suffix to the part number (not all options can be combined):

- ▼ Emergency ballast (1 Lamp) EM
- ▼ 220v AC 50Hz -225
- ▼ 220v AC 60Hz -226
- ▼ 277v AC 60Hz -276

## DIMENSIONS



Dimensions in inches

**LUMINAIRE TECHNICAL SPECIFICATIONS**

**EXTERIOR AND INTERNAL HOUSINGS**

Supplied in copper free aluminum with an oven-cured polyester powder coated finish as standard with natural aluminum mounting fittings. Optional stainless steel housings in a natural finish with stainless steel mounting fittings are also available.

**INTERIOR LENS FRAME AND LATCHES**

Stainless steel.

**OUTLETS**

All FWN units are supplied with two  $\frac{3}{4}$ " NPT outlets as standard providing a thru feed service where required.

**GASKETS**

One piece neoprene gasket provides an watertight seal between the lens and housing on the FWN luminaire.

**BALLAST**

An HPF 120v 60Hz ballast is supplied as standard. 32w and 40w luminaires are rated for starting in temperatures down to -18°C (0°F) and 60w luminaires in temperatures down to -29°C (-20°F).

**LAMP TYPE**

Available in two or three lamp 32, 40 and 60w luminaires in aluminum or two/three lamp 32 watt in stainless steel. Lamps are provided.

**LENS**

The FWN luminaire contained within the housing is supplied with a high impact matte acrylic drop lens. The housing itself has a colored diffuser available in yellow or blue.

**ORDERING REFERENCES**

**FLUORESCENT HELIPORT PERIMETER/FLOODLIGHT LUMINAIRES**

DESCRIPTION	NO OF LAMPS	LAMP TYPE	ALUMINUM WEIGHT (lbs)	FWN YELLOW DIFFUSER	FWN BLUE DIFFUSER
32w Rapid Start 265 MA 48" Lamp	Two	F32T8	50.0	FWN232A-HYL	FWN232A-HBL
	Three		55.0	FWN332A-HYL	FWN332A-HBL
40w Rapid Start 430 MA 48" Lamp	Two	F40T12	50.0	FWN240A-HYL	FWN240A-HBL
	Three		55.0	FWN340A-HYL	FWN340A-HBL
60w High Output 800 MA 48" Lamp	Two	F48T12 /HO	53.0	FWN260A-HYL	FWN260A-HBL
	Three		58.0	FWN360A-HYL	FWN360A-HBL

**SPARE PARTS**

<b>LAMP HOLDERS</b> 32w Fixture 40w Fixture 60w Fixture	<b>Stationary</b> FX4008	<b>Spring Loaded</b> FX4009	<b>GASKETS</b>  <b>BALLAST 120v AC 60Hz</b> 2 x 32w 2 x 40w 2 x 60w 1 x 32w 1 X 40w 1 X 60w	GKT6088-117.5  FX5260H FX5010 FX5027 FX5173H FX5054 FX5027
	FX4004	FX4005		
<b>FWN DROP LENS</b> Matte Acrylic 53 $\frac{1}{4}$ "	FX2137		<b>EMERGENCY BALLAST</b> <b>120/277V AC 60Hz</b>	FX5128HDU
<b>EXTERIOR HOUSING DIFFUSER</b> Yellow Lens Blue Lens	FX2024XYEL FX2024XBLU			
<b>LAMPS</b> 32w 40w 60w	INX3527 INX3504 INX3505		<b>INTERIOR MOUNTING BRACKET</b>	FX7027S/A