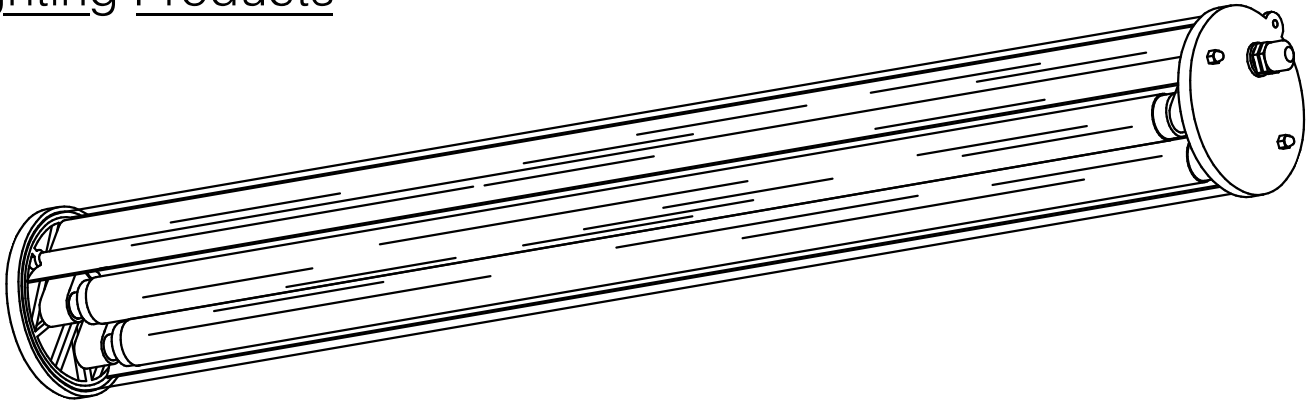




Lighting Products

- CSA - Class I Div. 2 - Groups A, B, C, & D
- CSA - Class I Zone 2 - Groups IIA, IIB & IIC
- CSA - Class II Div. 2 - Groups F & G
- CSA - Class III
- CSA - Type 4X
- Enclosed & Gasketed



WashPro

Processing & Wash Down Area Fluorescent

Features:

- **Two models** to choose from: **water-tight** or **hazardous area water-tight**.
- Totally **sealed fixture** design, suitable for **high pressure wash-down** areas.
- Tested at **1500 PSI** for **60 minute duration**, at 5' and 10' distance, nozzle dispersion 0 degree.
- **Corrosion resistance** non-metallic housing.
- **Extruded aluminum interior** assembly.
- All external **hardware stainless steel** or **non-metallic**.
- Standard clear, impact resistant, **acrylic lens**.
- **Silicone gasket** permanently mounted in end cap.
- **Spring loaded sockets** on all HO models.
- **Locking sockets** on RS models made of industrial grade **high temperature PBT**.
- Available in **single or feed-thru hub** design.
- Suspended **cable mounting** or **fixed stainless steel** hardware available.
- Optional **quick disconnect receptacle** available for non-hazardous models.
- **2, 4 & 8 foot models** with 2 lamp T5/T8/T12 designs or 3 & 6 lamp T5 designs.
- **8 foot models** are also available with four, 4 foot lamps.
- **Compact fluorescent** 2 lamp, 2 foot & 4 lamp, 4 foot models.

Applications:

- | | |
|--------------------------------|------------------------------------|
| ■ Food processing industry | ■ Food handling areas |
| ■ Marine applications | ■ Meat & poultry processing plants |
| ■ Degreasing facilities | ■ Pharmaceutical operations |
| ■ Meat & fish inspection areas | ■ Waste treatment plants |



WashPro

Catalog Number Logic

WP **8** - **2** **8** **1** **0** **C** - ******
(1) (2) (3) (4) (5) (6) (7) (8)

(1) Series

WP - WashPro, Watertight

WPH - WashPro, Hazardous Area
Impact resistant acrylic lens with non-metallic end caps.

WPS - WashPro, Watertight

WPSH - WashPro, Hazardous Area
Impact resistant acrylic lens with stainless steel end caps.

(2) Length (nominal)

- 2 - 2 foot
- 4 - 4 foot
- 8 - 8 foot

(3) Number of Lamps

- 2 - For 2 lamps
- 3 - For 3 lamps (T5 & T8)
- 4 - For 4 lamps
(4 foot fixture, ballast type 2 & 5 only and 8 foot fixtures with four, 4 foot lamps, ballast types 1, 4, 5 & 8).
- 6 - For 6 lamps (8 foot T5 & T8 non HO)

(4) Ballast Type

- 1 - 265 mA, T8 (2ft 17w or 4ft 32w)
(0° F & -18° C starting temp, 50/60Hz electronic ballast)
- 2 - 270 mA, 2G11 (2 or 4 ft 40w compact fluorescent)
(0° F & -18° C starting temp, 50/60Hz electronic ballast)
- 3 - 425 mA, T12, IS (8ft 75w) (8 foot models only)
(+50° F & +10° C starting temp, magnetic ballast)
- 4 - 430 mA, T12, RS (4ft 40w)*
(+50° F & +10° C starting temp, magnetic ballast)
- 5 - T5, HO, IS (2ft 24w or 4ft 54w)
(0° F & -18° C starting temp, 50/60Hz electronic ballast)
- 7 - 800 mA, T8, HO (4ft 44w or 8ft 86w)
(-20° F & -29° C starting temp, electronic ballast)
- 8 - 800 mA, T12, RS, HO (2ft 35w, 4ft 60w or 8ft 110w)
(-20° F & -29° C starting temp, magnetic ballast)
(electronic ballast standard on 8 foot models)

(5) Voltage / Frequency

- 1 - 120 Volt 60 Hz
- 4 - 220-240 Volt 60 Hz (T12 magnetic only)
- 5 - 277 Volt 60 Hz
- 6 - 347 Volt 60 Hz
- 7 - 120 to 277 Volt 50/60 Hz (ballast type 1, 2 & 5)

(5) Mounting Style

- 0 - Mounting c/w 1-1/2" strain relief connector
- 1 - Feed-thru c/w 2- 1/2" strain relief connectors
- 8 - Stainless steel quick release straps
c/w 1-1/2" strain relief connector
- 9 - Stainless steel quick release straps
c/w 2- 1/2" strain relief connectors

(Ceiling / wall brackets & chain suspension kits shown in mounting options.)

(7) Label:

- C - CSA (C/US)

(8) Special Options

- EM1** - Emergency ballast, all areas, 700 lumen
- L** - Lamps (energy saving except on HO)
- S** - Switch, power, on/off
- H** - Stainless steel straps (see WP1050MTK)
- Q** - Quick disconnect receptacle – connecting cords must be ordered separately. (see WP003MR)
- W6** - Cord assembly & strain relief connector. (see WP163SR-6)
16/3 cord 6 foot length standard, other lengths substitute "6" in feet.

Notes:

1. *** Limited availability, consult factory.**
2. **Lamps are not included.**
3. **All emergency units have integral test switch and charging circuit indicator lamp.**
4. **Consult factory for any catalog number or options not listed above for price and availability.**

WashPro

Ordering Guide, 120 Volt only

Fixture Length	Ballast Type	Lamp Type	No. of Lamps	Raw Lumen Output	Ordinary Location Catalog #	Hazardous Location Catalog #
Two Foot	Electronic	F17T8	2	2,393	WP2-2110C	WPH2-2110C
		F24T5/HO	3	6,000	WP2-3570C	WPH2-3570C
		FT40W/2G11	2	7,245	WP2-2210C	WPH2-2210C
Four Foot	Electronic	F32T8	2	6,962	WP4-2110C	WPH4-2110C
			3	10,443	WP4-3110C	WPH4-3110C
		FT40W/2G11	4	12,600	WP4-4210C	WPH4-4210C
		F54T5/HO	2	10,000	WP4-2570C	WPH4-2570C
			3	15,000	WP4-3570C	WPH4-3570C
	Magnetic	F48T12/HO	2	6,885	WP4-2810C	WPH4-2810C
Eight Foot	Electronic	F32T8	4	13,924	WP8-4110C	WPH8-4110C
			4	20,000	WP8-4570C	WPH8-4570C
		F54T5/HO	6	30,000	WP8-6570C	WPH8-6570C
			2	14,432	WP8-2710C	WPH8-2710C
		F96T8/HO	2	16,020	WP8-2810C	WPH8-2810C
	Magnetic	F96T12/ES	2	10,010	WP8-2310C	WPH8-2310C

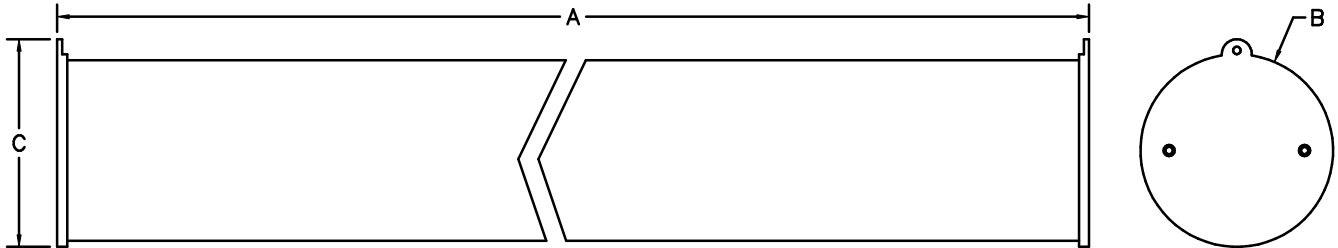
Notes: Catalog number shown is for end mount style, option mounting hardware must be ordered separately.
 All models have single 1/2" npt. hub with a non-metallic cable connector installed.
 For feed-thru design change last number "0" to "1", includes 1/2" non-metallic cable connector.
 Two foot fixtures available with ballast types 1, 2 and 8, see Catalog Number Logic page.

Certification Guide

All items approved for a minimum of 40° ambient. Fixtures certified to higher ambients available, please contact factory.		Class I Div. 2 Groups A, B, C & D		Class I Zone 2 Groups IIA, IIB & IIC		Class II Div. 2 Class III	
Ballast Type	No. of Lamps	Approval	T-Rating	Approval	T-Rating	Approval	Groups
Electronic, T5, HO, IS	3 & 6	CSA	T4	CSA	T4	-	-
Electronic, 265mA, T8, RS	2	CSA	T5	CSA	T5	CSA	F & G
Electronic, 270mA, 2G11, RS	2 & 4	CSA	T5	CSA	T5	CSA	F & G
Magnetic, 430mA, T12, RS	2	CSA	T5	CSA	T5	CSA	F & G
Magnetic, 800mA, T12, HO (4 ft.)	2	CSA	T4A	CSA	T4	CSA	F & G
Electronic, 800mA, T12, HO (8 ft.)	2	CSA	T5	CSA	T5	CSA	F & G

WashPro

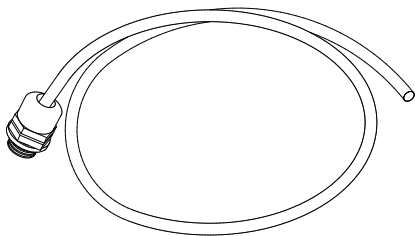
Dimensions



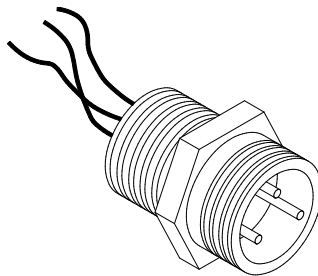
Nominal Length	Dimensions in Inches / Centimeters			Cubic Size Feet / Meter	Weight lb. / kg
	A	B	C		
2 Foot	25.0 / 63.5	6.4 / 16.3	7.03 / 17.86	1.00 / 0.0283	12.4 / 5.6
4 Foot	49.0 / 124.5	6.4 / 16.3	7.03 / 17.86	1.88 / 0.0532	20.3 / 9.2
8 Foot	97.0 / 246.4	6.4 / 16.3	7.03 / 17.86	3.67 / 0.1039	36.1 / 16.4

Weights shown are for 2 lamp HO model. Add 4 lb. / 1.8 kg. for magnetic 425mA model.
Deduct 1 lb. / .45 kg. for all other models

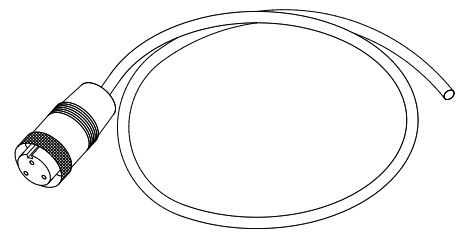
Spare Parts



WP163SR-6
Cord assembly consisting of; strain relief connector, 6' of #16/3 cable.
If longer cable required change suffix to length needed. Factory installed when ordered with fixture as option W6.



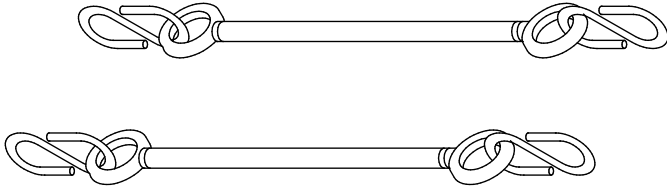
WP003MR
Quick disconnect receptacle. Required when #WP163FP-6 is used.
Factory installed when ordered with fixture as option Q.



WP163FP-6
Cord assembly consisting of; molded plug & 6' of #16/3 cable.
If longer cable required change suffix to length needed

WashPro

Mounting Options

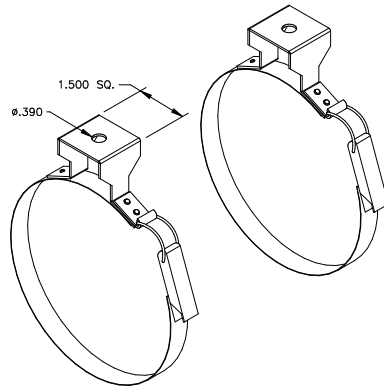
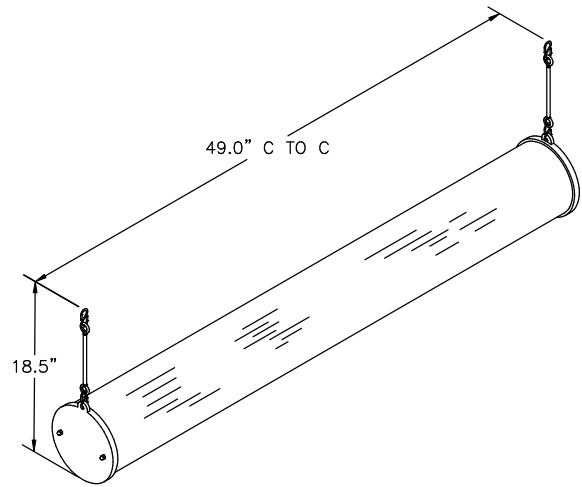


WP1012MTK

Suspended cable kit.

Consisting of; 2 - 12" nylon coated stainless steel cables c/w crimped on loops & 2 - "S" hooks.

If longer cable required change "12" in part # to required length.



WP1050MTK

Stainless steel straps.

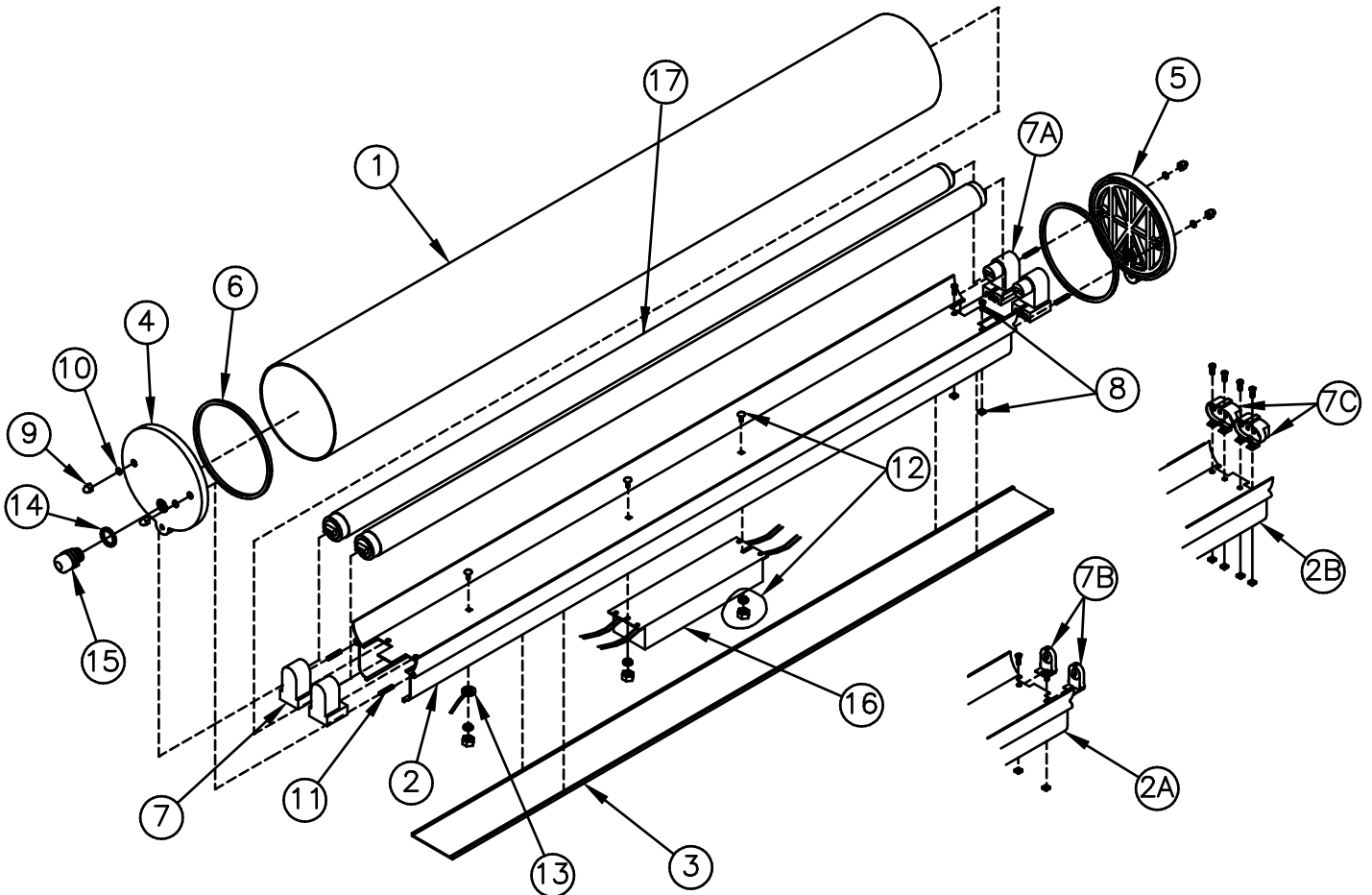
Consisting of 2 quick release, stainless steel straps.

Factory installed

when ordered with fixture as option H.

WashPro

Parts List



Item No.	Part No.	Description	No Req'd	Item No.	Part No.	Description	No Req'd
1	007-4000	Tube, acrylic for all 4 ft. models	1	7A	758-0464	Socket, RDC, spring loaded for all HO models	2 or 4
1*	007-8000	Tube, acrylic for all 8 ft. models	1	7B	754-8701	Socket, Bi-pin, for all T8 / T12 models	4 or 8
1*	007-2000	Tube, acrylic for all 2 ft. models	1	7C	752-6050	Socket, 2G11 type, for all 2G11 CF models	2 or 4
2	007-0408	Inner channel for 4 ft., HO model	1	7D	752-0002	Socket, Fixed for T5	2
2A	007-0404	Inner channel for 4 ft., T8 / T12 models	1	7*	752-5766	Support,lamp, for all 2G11 CF models	2 or 4
2B	007-0402	Inner channel for 4 ft., 2G11 CF model	1	7*	755-0214	Socket, single pin, fixed for T12, 8 ft. model	2
2*	007-0800	Inner channel, 8 ft. models with 8 foot clamps	1	7*	755-2015	Socket, single pin, spring loaded, T12, 8ft. model	2
2*	007-0804	Inner channel, 8 ft. models c/w 4 - 4 foot lamps	1	8	380-6817	Mounting hardware, socket mounting, all models	4 or 8 sets
2*	007-0204	Inner channel for 2 ft., T8 model	1	9	312-0104	Nut, stainless steel closed end, for all models	4
2*	007-0202	Inner channel for 2 ft., 2G11 CF model	1	10	370-0104	Gasket, O-ring for stud on all models	4
3	007-0304	Channel cover for all 4 ft. models	1	11	312-0703	Stud, SS secures end cap to inner channel	4
3*	007-0308	Channel cover for all 8 ft. models	1	12	380-0017	Mounting hardware, ballast / ground terminal	3 sets
3*	007-0302	Channel cover for all 2 ft. models	1	13	380-1440	Grounding hardware assembly for all models	1 set
4	007-1050	End cap, electrical end (1/2" npt hub) all models	1	14	370-0155	Gasket, for cord connector or opt. receptacle	1
5	007-1000	End cap, non-electrical end for all models	1	15	355-0538	Connector, cord strain relief, 1/2" npt. non-metallic	1
6	007-1500	Gasket, O-ring for either end cap	2	15*	WP003MR	See previous page	1
7	758-0465	Socket, RDC, fixed for all HO models	2 or 4	16	Ballast (See ballast chart page for type)		1 or 2
				17	Lamps (See lamp chart page for type)		2 or 4

* Item not shown in drawing